

SPIROMETER



NEW BREATH

SPIROLYSER® Q13®



DETECTION OF BREATHING DIFFICULTIES:

Simple, modern, quick to use

According to the MEAT principle with disposable mouthpieces

Concept « **No Contact, No Risk** » :

- No calibration
- No disinfection
- No cross-contamination

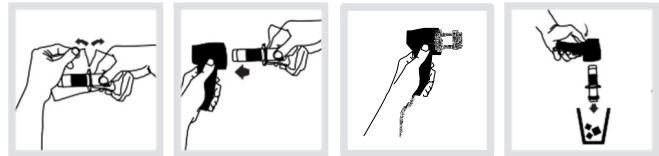


A CONCENTRATE OF TECHNOLOGY

For more than 25 years, FIM Medical has opted for the Fleisch-based pneumotachograph for the design of its spirometers, which is very popular for its reproducibility and measurement accuracy. A patented technology that reproduces the technique of sensor in **disposable version**.

THE CONCEPT OF "NO CONTACT NO RISK"

Each **Qflow®** disposable mouthpiece is individually packaged in a pre-perforated bag. **After the test, the dirty mouthpiece is ejected with an intelligent mechanism.** The mouthpiece does not come into contact with the operator at any time.



The **Spirolyser® Q13®** belongs to the new generation of spirometers that **do not need to be** calibrated or disinfected. Laboratory tests with the Qflow® prove that the risk of cross-contamination between patients **can be eliminated** by 99.999%.

The **Spirolyser® Q13®** is an electronic spirometer based on the MEAT principle with disposable mouthpieces, intended for healthcare professionals. Its design, technology and ergonomics make it an indispensable tool for measuring respiratory volume for medical prevention.

SPIROMETER SPIROLYSER® Q13®

THE +

- ▶ Numerous test options: vital capacity (VC), forced vital capacity (FVC) before and after medication, maximum respiratory minute volume (AMV)
- ▶ Measures temperature, air pressure and humidity thanks to the integrated weather station
- ▶ Export and print measurements Compare measurements over time Secure database
- ▶ Compatible with a wide range of software packages
- ▶ Help in interpreting the results



**KNEW
YOU ALREADY?**

85% of patients with chronic obstructive pulmonary disease (COPD) have consulted their primary care physician in the 5 years prior to their diagnosis. respiratory symptoms, which should have drawn attention to it.

HOW IS COPD DIAGNOSED?
By detecting the "obstructive breathing difficulties" by spirometry.

YOUR DEALER

MEDICARE AG

Medical equipment Hauptstrasse 51, 5026
Küttigen, Tel. 044/482 482 6
Fax 044/482 74 88, e-mail info@medicareag.ch



ACCESSORIES (supplied):

Transport cover

OTHER ACCESSORIES (not included):

- Qflow Disposable Mouthpieces
- Nose clips (box of 200 pieces)
- Calibration syringe

Hans Rudolph 5570, 3 I



51 rue Antoine Primat - CS 60194
69625 Villeurbanne Cedex
France

Phone +33 (0)4 72 34 89
89
Fax +33 (0)4 72 33 43 51
contact@fim-medical.com

0459